

I-MAT INTERLOCK



DETAILS:

Size:

54" W x 32" L x 1-1/4" (12 sqft)

Weight:

90 lbs

Colors: (Actual colors may vary)

Grey, Black, Redwood, Brown, Terra-cotta

Applications:

Equestrian flooring, boulevards, & resurfacing.

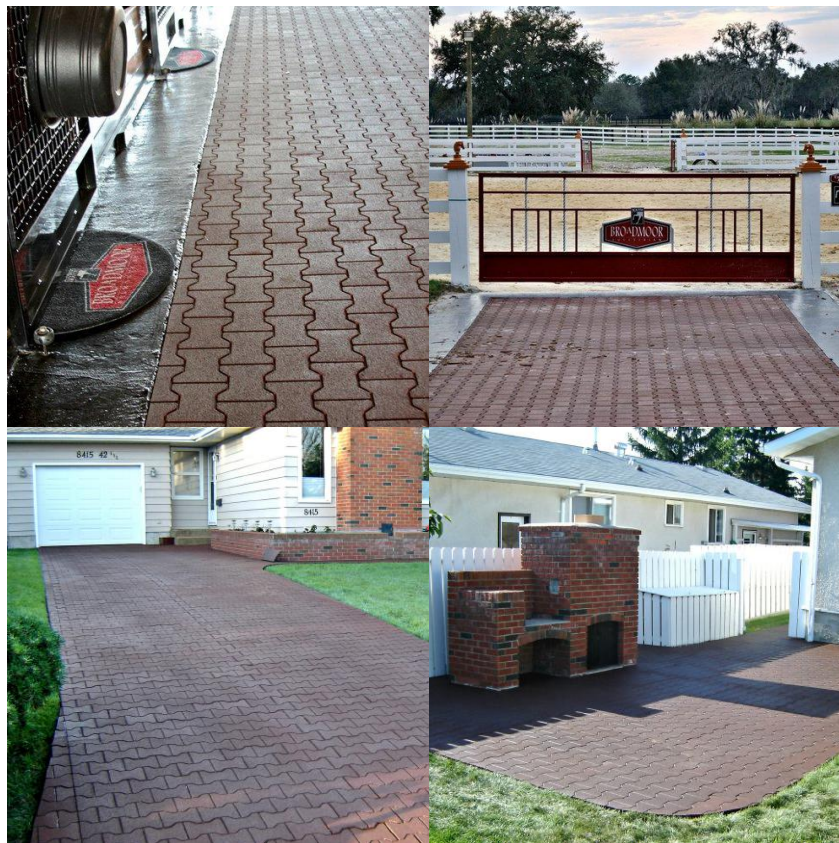
Shipping:

FOB Legal, Alberta, Canada.



ADVANTAGES:

- Characterized by the “dog-bone” pattern, offers a patented full 4-way **interlock design** capability in a large 12 sq. ft. tile.
- Is recommended for all outdoor applications and is ideal for installations on a compacted gravel base.
- An ideal **alternative** to brick pavers.
- Extremely **fast & easy to install**.
- Safe, **anti-slip** surface.
- All season all-weather **durability**.
- Patented fully **interlocking** design.
- Made from **100% Recycled Tires**.
- In areas where there are no edge or wall restraints snap-edging or restraint bordering of some type may be recommended (Not necessarily required in all situations).



Champagne Edition Inc. T/A Eco-Flex
57425 RR 253, Sturgeon County, AB, Canada T0G 1L1
info@eco-flex.com | www.eco-flex.com
1-866-326-3539

